



# Pacific

QUILT DESIGNED BY AGFstudio



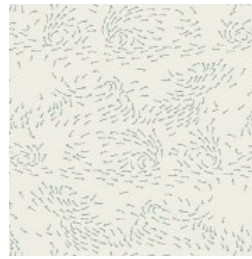
## serenity FUSION



**FUS-SE-2101**  
TRAVELER SERENITY  
*by Sharon Holland*



**FUS-SE-2102**  
+ YOUR HEART SERENITY  
*by Katarina Roccella*



**FUS-SE-2104**  
TRADE WINDS SERENITY  
*by Sharon Holland*



**FUS-SE-2105**  
TRIANGULAR SERENITY  
*by Maureen Cracknell*



**FUS-SE-2106**  
SEEDS OF SERENITY  
*by Katarina Roccella*



**FUS-SE-2107**  
SAUVAGE SKY SERENITY  
*by Pat Bravo*



**FUS-SE-2109**  
PLUMAGE SERENITY  
*by Bonnie Christine*



**FUS-SE-2110**  
NESTED SERENITY  
*by Bonnie Christine*



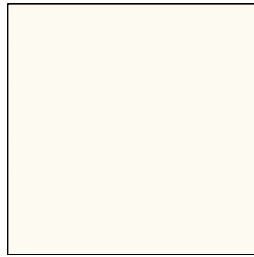
**FUS-SE-2111**  
AURA FLETCHINGS SERENITY  
*by Maureen Cracknell*



ADDITIONAL BLENDERS FOR THIS PROJECT



DEN-L-4000  
SOFT SAND



PE-408  
WHITE LINEN

# \*Pacific\*

FINISHED SIZE | 80" x 83"

## FABRIC REQUIREMENTS

Fabric <b>A</b>	FUS-SE-2111	5/8 yd.
Fabric <b>B</b>	FUS-SE-2110	3/8 yd.
Fabric <b>C</b>	FUS-SE-2109	1 1/8 yd.
Fabric <b>D</b>	FUS-SE-2107	1 1/8 yd.
Fabric <b>E</b>	FUS-SE-2106	1 1/4 yd.
Fabric <b>F</b>	FUS-SE-2105	5/8 yd.
Fabric <b>G</b>	FUS-SE-2104	5/8 yd.
Fabric <b>H</b>	FUS-SE-2102	1 1/8 yd.
Fabric <b>I</b>	FUS-SE-2101	5/8 yd.
Fabric <b>J</b>	DEN-L-4000	1 1/8 yd.
Fabric <b>K</b>	PE-408	1 1/8 yd.

### BACKING FABRIC

FUS-SE-2100 7 3/4 yds (Suggested)

### BINDING FABRIC

Fabric **B** FUS-SE-2110 (Included)

## CUTTING DIRECTIONS

1/4" seam allowances are included.  
WOF means width of fabric.

- Three (3) 5 3/4" x WOF strips from fabric **A**.
- Fourteen (14) 2 1/2" x WOF strips from fabric **C**.
- Fifteen (15) 2 1/2" x WOF strips from fabric **D**.
- Sixteen (16) 2 1/2" x WOF strips from fabric **E**.
- Three (3) 5 3/4" x WOF strips from fabric **F**.
- Three (3) 5 3/4" x WOF strips from fabric **G**.
- Fourteen (14) 2 1/2" x WOF strips from fabric **H**.
- Three (3) 5 3/4" x WOF strips from fabric **I**.
- Fifteen (15) 2 1/2" x WOF strips from fabric **J**.
- Sixteen (16) 2 1/2" x WOF strips from fabric **K**.

## CONSTRUCTION

Sew all rights sides together with 1/4" seam allowance.

### Block 1:

- Take four (4) 2 1/2" x WOF strips from fabrics **C**, **K**, and **D**.
- Make four (4) **CKD** strip sets, and then subcut them using template a to get a total of fifteen (15) block 1.

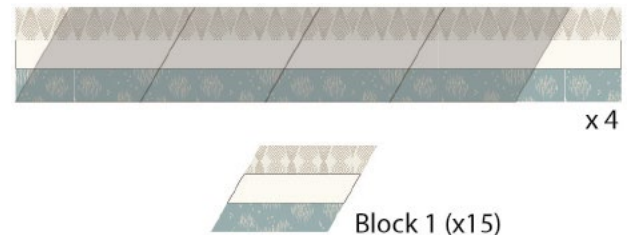


DIAGRAM 1

### Block 2:

- Take four (4) 2½" x WOF strips from fabrics **J**, **E**, and **C**.
- Make four (4) **JEC** strip sets, and then subcut them using template a to get a total of fifteen (15) block 2.

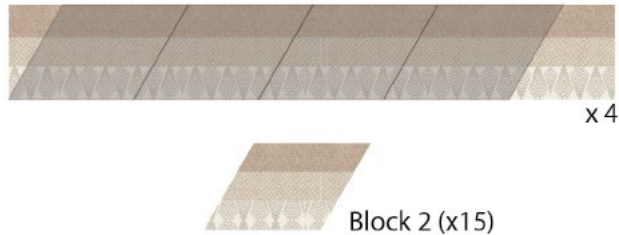


DIAGRAM 2

### Block 3:

- Take three (3) 2½" x WOF strips from fabrics **D**, **E**, and **H**.
- Make three (3) **DEH** strip sets, and then subcut them using template a to get a total of twelve (12) block 3

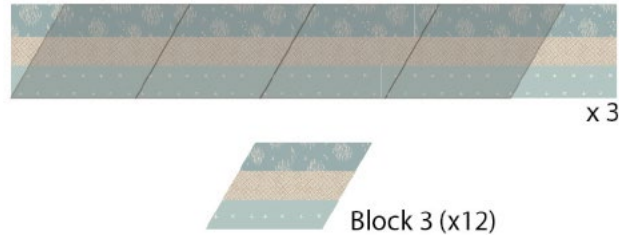


DIAGRAM 3

### Block 4:

- Take three (3) 2½" x WOF strips from fabrics **H**, **K**, and **J**.
- Make three (3) **JKJ** strip sets, and then subcut them using template a to get a total of twelve (12) block 4.

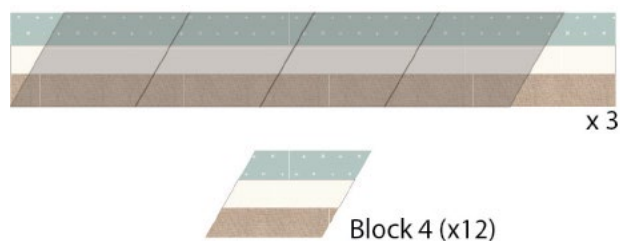


DIAGRAM 4

### Block 5:

- Take one (1) 2½" x WOF strip from fabrics **H**, **K**, and **D**.
- Make one (1) **HKD** strip sets, and then subcut them using template a to get a total of three (3) block 5.

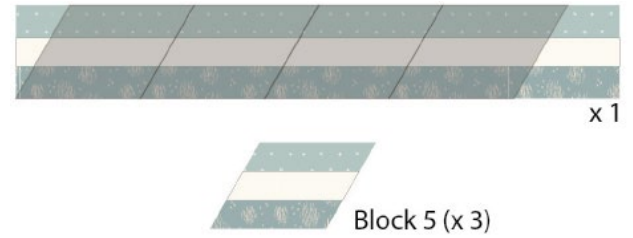


DIAGRAM 5

### Block 6:

- Take one (1) 2½" x WOF strip from fabrics **J**, **E**, and **H**.
- Make one (1) **JEH** strip sets, and then subcut them using template a to get a total of three (3) block 6.

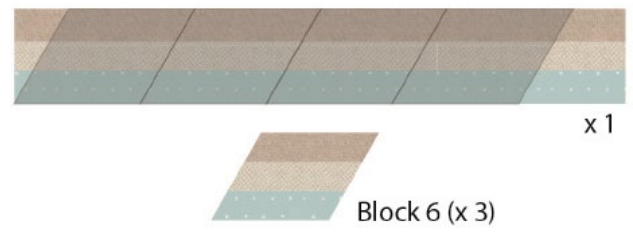


DIAGRAM 6

### Block 7:

- Take two (2) 2½" x WOF strips from fabrics **J** and **E**.
- Make two (2) **JE** strip sets, and then subcut them using template b to get a total of six (6) block 7.



DIAGRAM 7











## QUILT ASSEMBLY

*Sew rights sides together.*

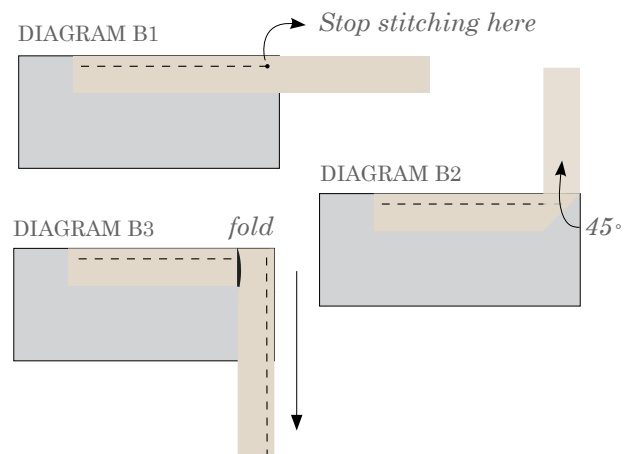
- Place BACKING FABRIC on a large surface wrong side up. Stretch it with masking tape against that surface.
- Place BATTING on top of backing fabric.
- Place TOP on top of the batting with right side facing up. Smooth away wrinkles using your hands.
- Pin all layers together and baste with basting thread, using long stitches. You can also use safety pins to join the layers.
- Machine or hand quilt starting at the center and working towards the corners. Remember that quilting motifs are a matter of personal preference. Have fun choosing yours!
- After you finished, trim excess of any fabric or batting, squaring the quilt to proceed to bind it.

## BINDING

*Sew rights sides together.*

- Cut enough strips  $1\frac{1}{2}$ " wide by the width of the fabric **B** to make a final strip 336" long. Start sewing the binding strip in the middle of one of the sides of the quilt, placing the strip right side down and leaving an approximated 5" tail. Sew with  $\frac{1}{4}$ " seam allowance (using straight stitch), aligning the strip's raw edge with the quilt top's raw edge.
- Stop stitching  $\frac{1}{4}$ " before the edge of the quilt (DIAGRAM B 1). Clip the threads. Remove the quilt from under the machine presser foot. Fold the strip in a motion of  $45^\circ$  and upward, pressing with your fingers (DIAGRAM B2). Hold this fold with your finger, bring the strip down in line with the next edge, making a horizontal fold that aligns with the top edge of the quilt (DIAGRAM B3). Start sewing at  $\frac{1}{4}$ " of the border, stitching all the layers. Do the same in the four corners of the quilt.

- Stop stitching before you reach the last 5 or 6 inches. Cut the threads and remove the quilt from under the machine presser foot. Lay the loose ends of the binding flat along the quilt edge, folding the ends back on themselves where they meet. Press them together to form a crease. Using this crease as the stitching line, sew the two open ends of the binding with right sides together (you can help yourself marking with a pencil if the crease is difficult to see).
- Trim seam to  $\frac{1}{4}$ " and press open. Complete the sewing. Turn binding to back of the quilt, turn raw edge inside and stitch by hand using blind stitch.





Printer  
Test  
Square  
1" x 1"

